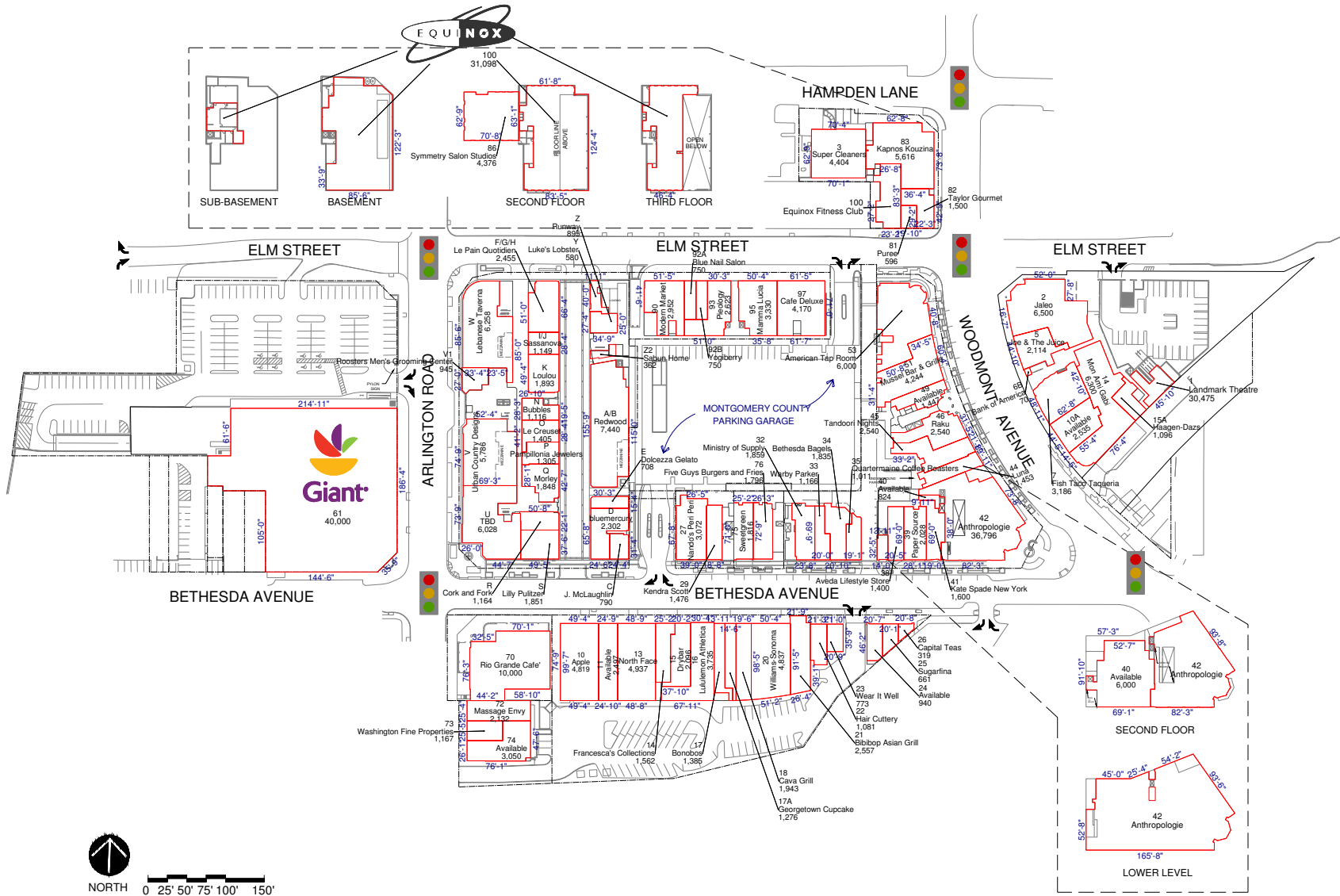


BETHESDA ROW

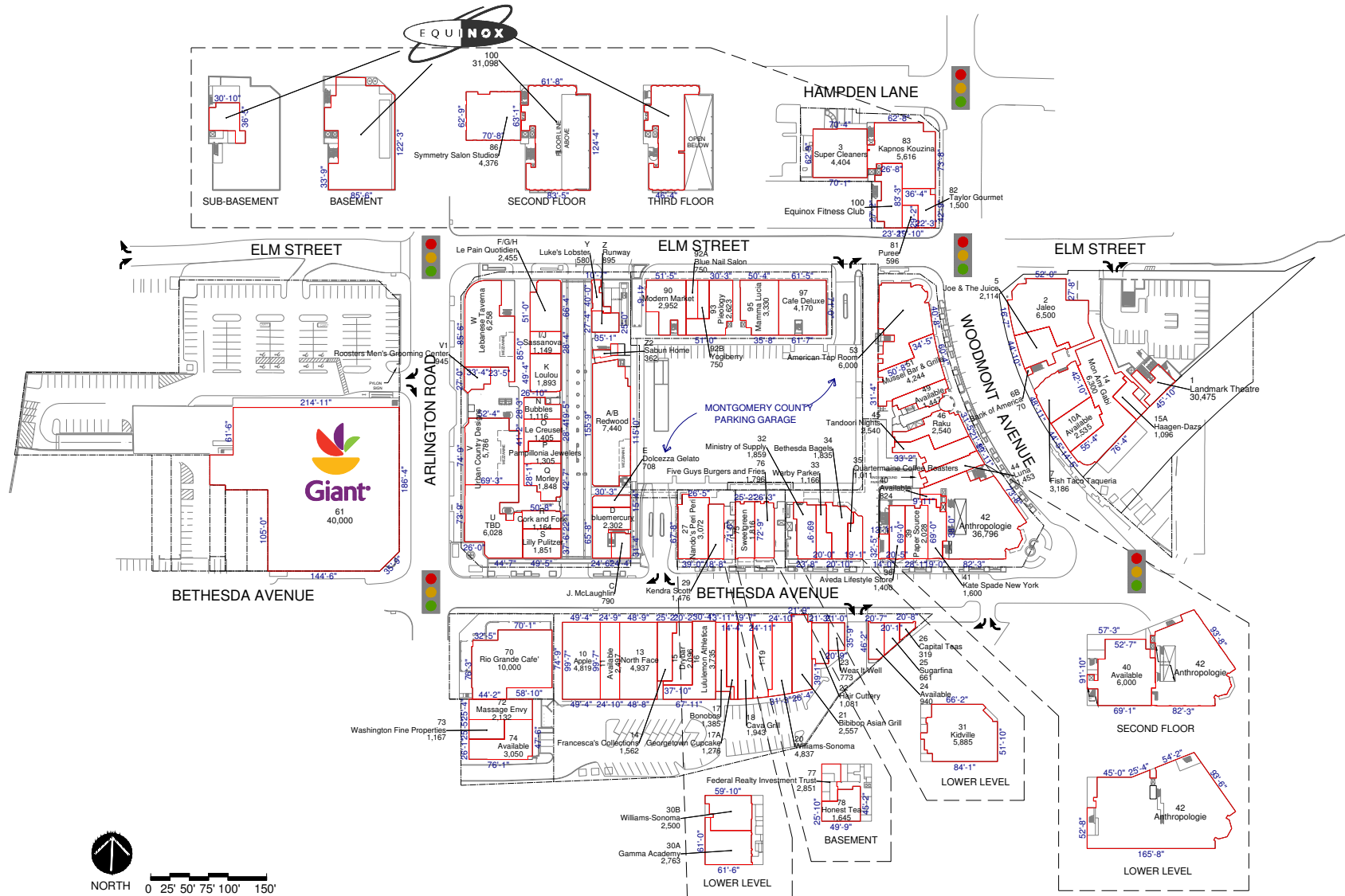
Bethesda, MD
GLA 533,000 SF



Corporate Headquarters | 1626 East Jefferson Street, Rockville, MD 20852 | PH 301.998.8100 | FX 800.658.8980 | www.federalrealty.com
Regional Office | 1626 East Jefferson Street, Rockville, MD 20852 | PH 301.998.8100 | FX 301.998.3700

The parties acknowledge that this Plan is for identification purposes only and does not constitute any covenant, representation, or warranty by Landlord that any existing or future conditions shown exists, or that, if they do exist, will continue to exist through out all or any part of the Lease term, except to the extent such covenant, representation or warranty is expressly set forth in the Lease.

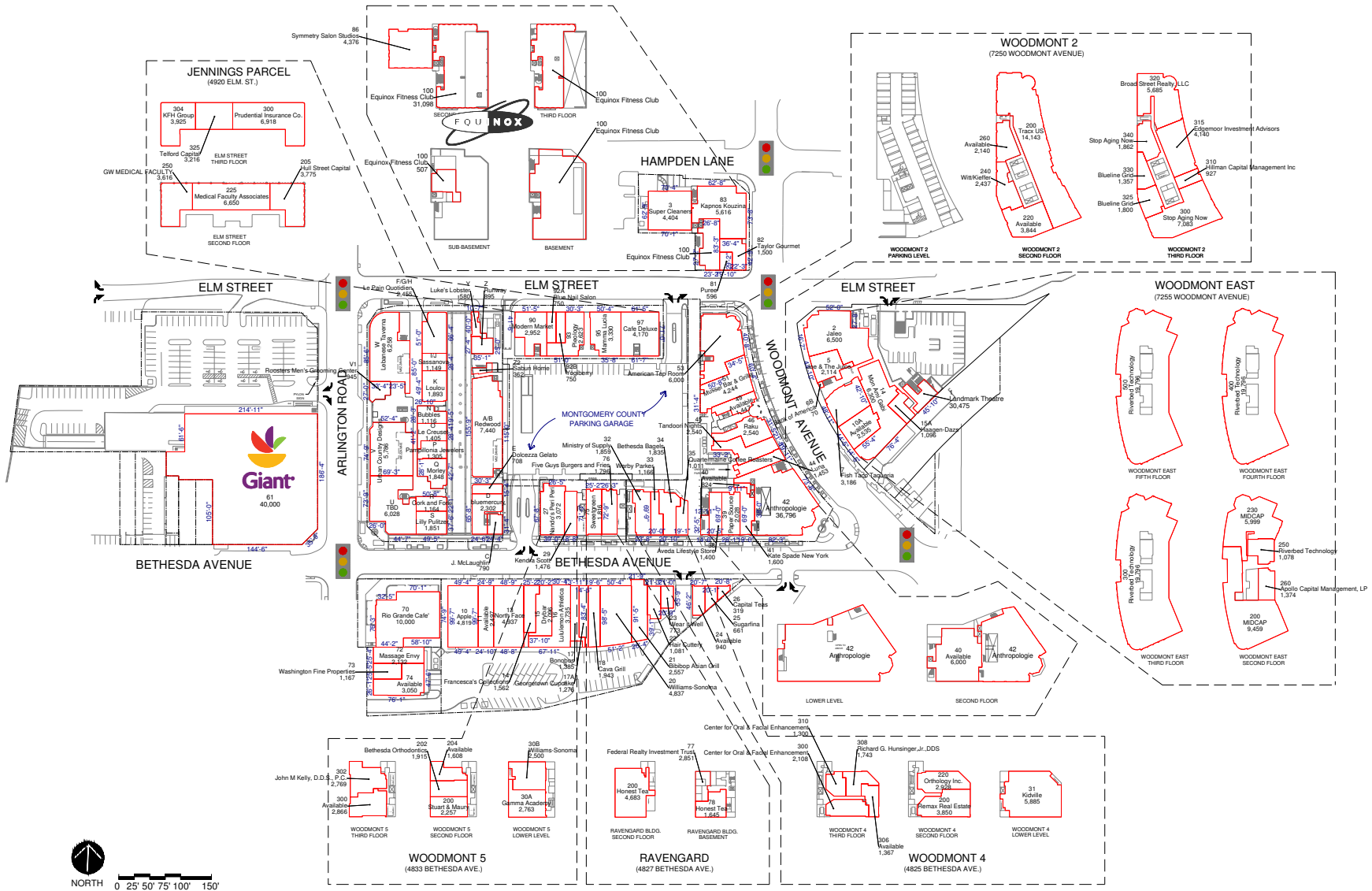
BETHESDA RETAIL AND LOWER LEVEL



Corporate Headquarters | 1626 East Jefferson Street, Rockville, MD 20852 | PH 301.998.8100 | FX 800.658.8980 | www.federalrealty.com
Regional Office | 1626 East Jefferson Street, Rockville, MD 20852 | PH 301.998.8100 | FX 301.998.3700

The parties acknowledge that this Plan is for identification purposes only and does not constitute any covenant, representation, or warranty by Landlord that any existing or future conditions shown exists, or that, if they do exist, will continue to exist through out all or any part of the Lease term, except to the extent such covenant, representation or warranty is expressly set forth in the Lease.

BETHESDA RETAIL AND OFFICE



Corporate Headquarters | 1626 East Jefferson Street, Rockville, MD 20852 | PH 301.998.8100 | FX 800.658.8980 | www.federalrealty.com
Regional Office | 1626 East Jefferson Street, Rockville, MD 20852 | PH 301.998.8100 | FX 301.998.3700

The parties acknowledge that this Plan is for identification purposes only and does not constitute any covenant, representation, or warranty by Landlord that any existing or future conditions shown exists, or that, if they do exist, will continue to exist through out all or any part of the Lease term, except to the extent such covenant, representation or warranty is expressly set forth in the Lease.